

Appendix “D”

MANUAL TRIM PANEL



Figure D-1: F-16 Left Console with Manual Trim Panel (For reference only)

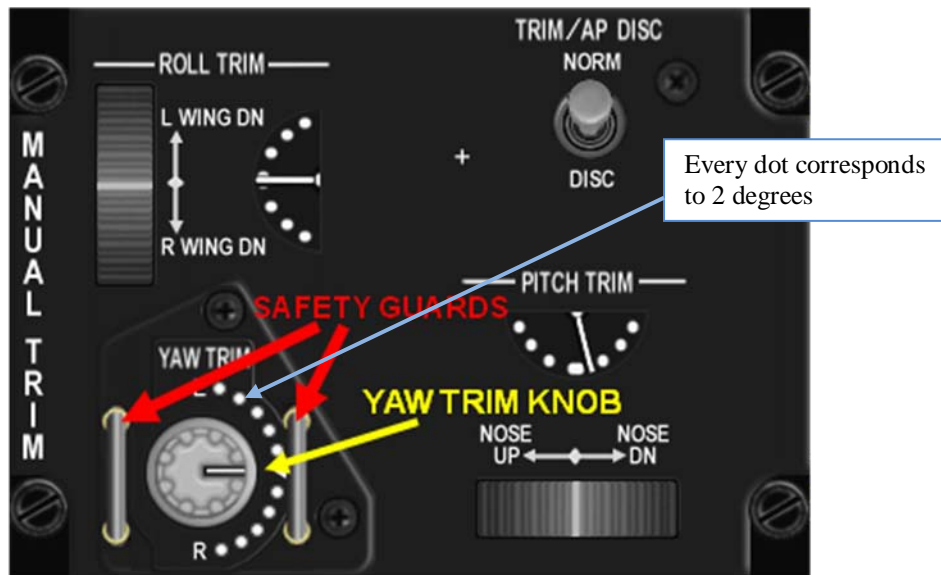
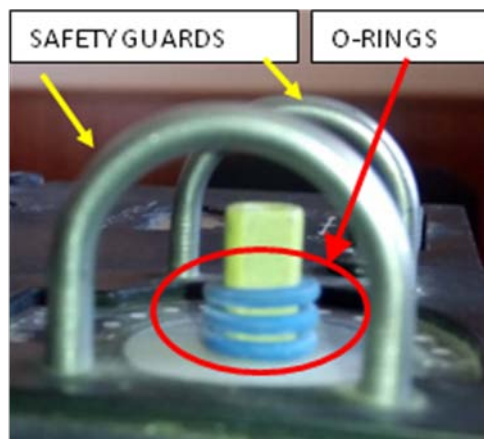


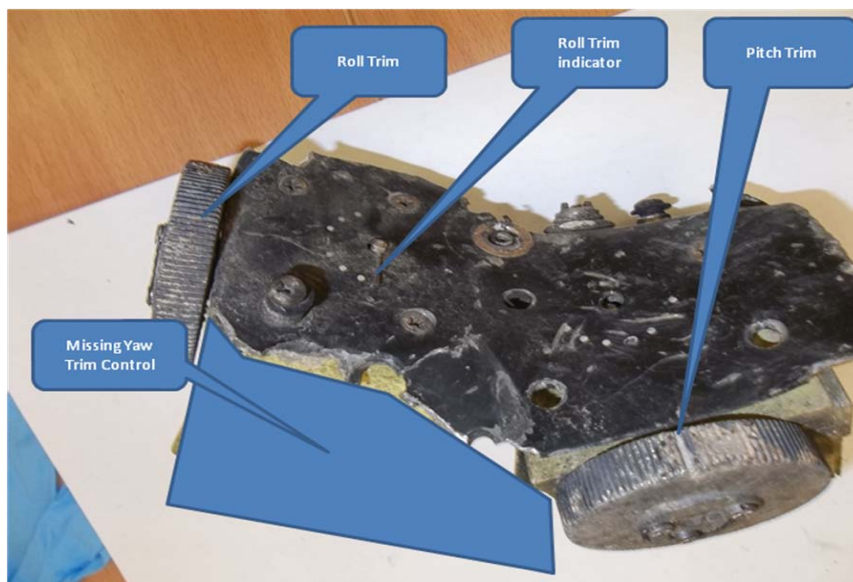
Figure D-2: Drawing of Manual Trim Panel. Physical dimensions of Manual Trim Panel are 4 by 5 inches (approximately 10 by 12.5 cm)



Picture D-3: Close view of Yaw Trim Knob and the two safety guards. Yaw trim knob of the figure is positioned to -8° (8 degrees to the right). Every dot corresponds to 2 degrees.

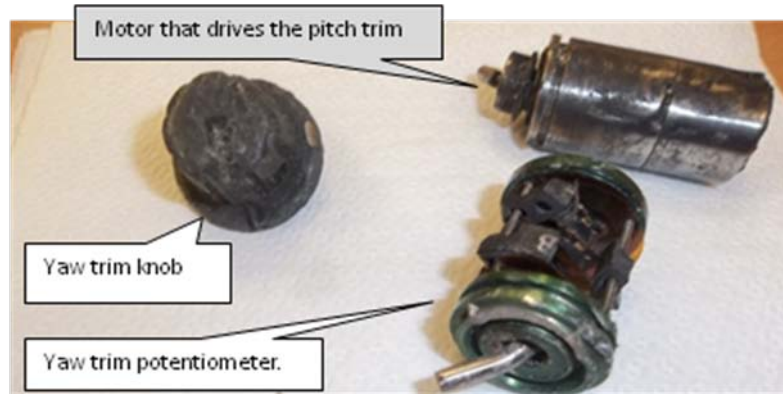


Picture D-4: Three (3) O-rings installed between the knob and panel facing provide the required friction to maintain the yaw trim knob position

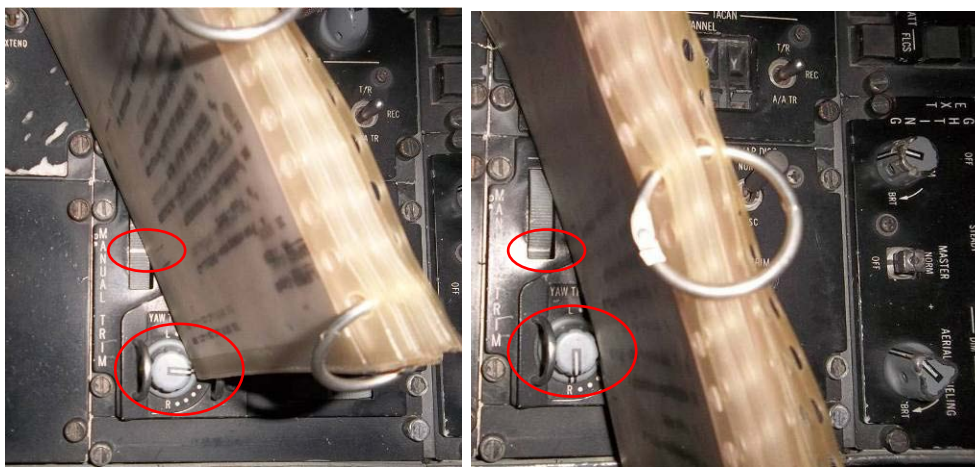


Picture D-5: MA Trim Panel

D-3



Picture D-6: Yaw trim Knob, Yaw trim potentiometer and pitch trim motor of MA



Pictures D-7: SIB physical test: A blocked object (such as a checklist) between the yaw knob and the safety guard, can cause similar roll and yaw trim movements as recorded in the MA.